

# 2025 Product Catalogue



[www.BrendaRoweArtwork.com](http://www.BrendaRoweArtwork.com)





# Table of Contents

Ordering Information	4	Still Life	27
MACROWE by Brenda Rowe	5	Found in the Undertow	28
All Things Water	10	Watercolour Whimsy	30
Flora & Fauna	18	About Brenda	33
People	20	Product Descriptions	34
History & Heritage	22	Contact Information	40
Beacons of Hope	24		



# Ordering Information



My products and images are carefully selected to be functional, easy to transport, and high-quality. The images evoke fond memories in the viewer.

## Ordering is easy with 2 methods available to place your order!

- **By E-Mail** - Submit your order by e-mail listing product choices & quantities or complete my Order Sheet.
- **By Phone** - Call me with your product choices & quantities.

Not all images available in all product types. Special Order may be available.

All products are display-ready. Generally production time is 3-4 weeks plus shipping.

No Minimum Order. Credit Card and EFT accepted. First order must be prepaid, Net 30 available for existing accounts. Local pick-up/delivery available, other pick-up locations may be available. Shipping costs otherwise apply.

***Please note pricing has slightly increased for some products, please consult the 2025 Order Sheet for details. HST Is now being charged on all orders.***

**QUESTIONS?** I'll be happy to assist you!

Call **709-437-7693** or e-mail **brenda@brendarowartwork.com**

**GST/HST # 74043 2620 RT0001**





# MACROWE by Brenda Rowe

My fascination with close detail emerged from my photography work. I would zoom in on specific areas of interest within the subject knowing I could translate these areas into compositions on larger canvases using paint. The “mystery” of the subject referenced in **MACROWE by Brenda Rowe** paintings is what excites me – finding new patterns, colors and shapes beyond the recognizable form of the entire subject. The unexpected shift in scale provides a unique vantage point for the viewer by evoking a natural curiosity to engage and discover.



**Jellybean Houses**  
**M106**



**Reflections**  
**M101**



**Slumber Awaits**  
**M108**

**Rock Solid**  
**M103**





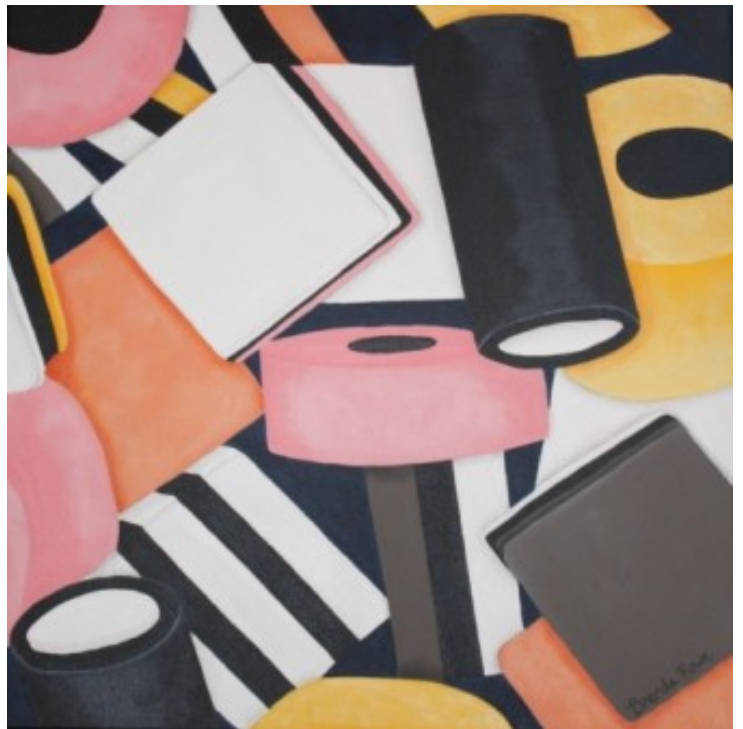
**Still Some Shine**  
**M110**

**In the Mirror**  
**M102**  
**(image on right)**

**Tied Off**  
**M109**



**Mom's Favourites**  
**M105**





# All Things Water



The **All Things Water** series explores the vital part that water plays in our culture and everyday life in Newfoundland and Labrador. From boats, icebergs, to beaches, coves and bays, the natural beauty of our Province is displayed.



**Boatload of Colour**  
**A201**



**Home for a Rest**  
**A204**



**Floating Majesty**  
**A206**



**Splash**  
**A209**

**Bidin' My Time**  
**A210**



**Fogo Isle Red**  
**A211**





**Boats of**  
**Quidi Vidi**  
**A202**

**Quidi Vidi View**  
**A215**





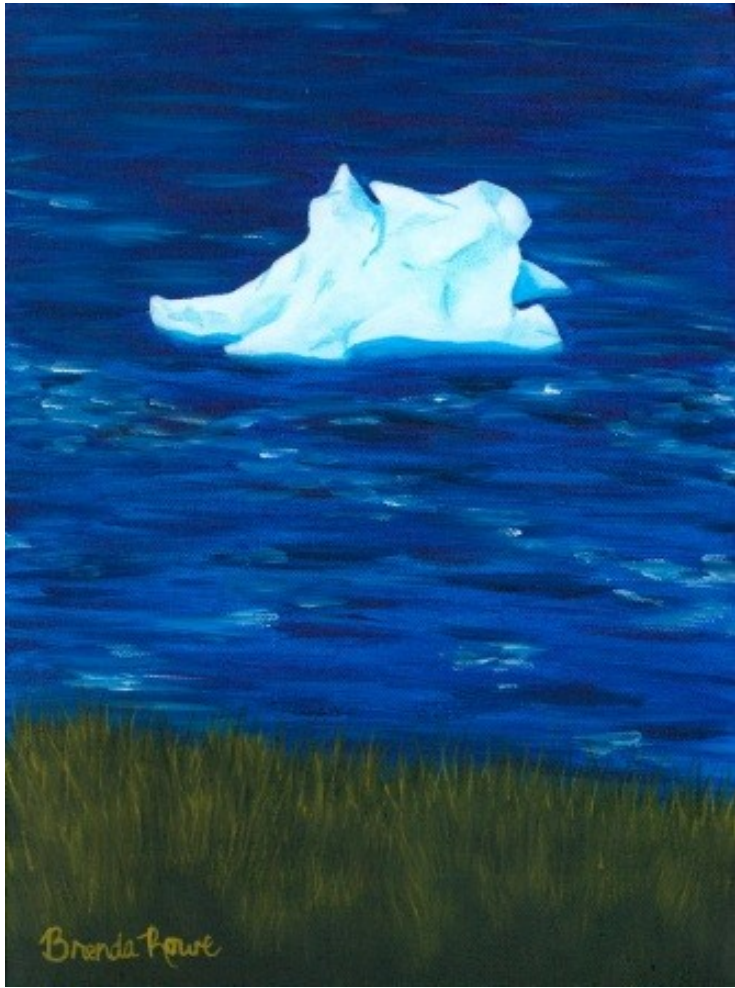
**Western Brook Pond (LONG)**  
**A214**



**Western Brook Pond Fjord**  
**A205**

**Tablelands**  
**A213**





**Seaside Visitor**  
**A207**

**Surf `n Turf**  
**A208**





**Cavendish Sheds**  
**A212**



**Pop's Punt**  
**A203**

The **Flora & Fauna** series explores iconic and beautiful plants, flowers, and animals of our Province including our Provincial bird, the Atlantic Puffin.



**Plenty of Fish**  
**F504**

**Gannet Dance**  
**F503**

**Puffin**  
**F501**



**Keeping Watch**  
**F502**



**One**  
**F505**

The **People** series focuses on subjects that evoke familiar feelings and memories.



**Winter Delight**  
**P401**



**Mummers ORNAMENT**  
**(HOUSE VIEW)\***



**Mummers ORNAMENT  
(BACK VIEW)\***



**Mummers ORNAMENT  
(GREEN/ORANGE)\***



**Mummers Round the Bend  
(FULL IMAGE) P403F**

# History & Heritage



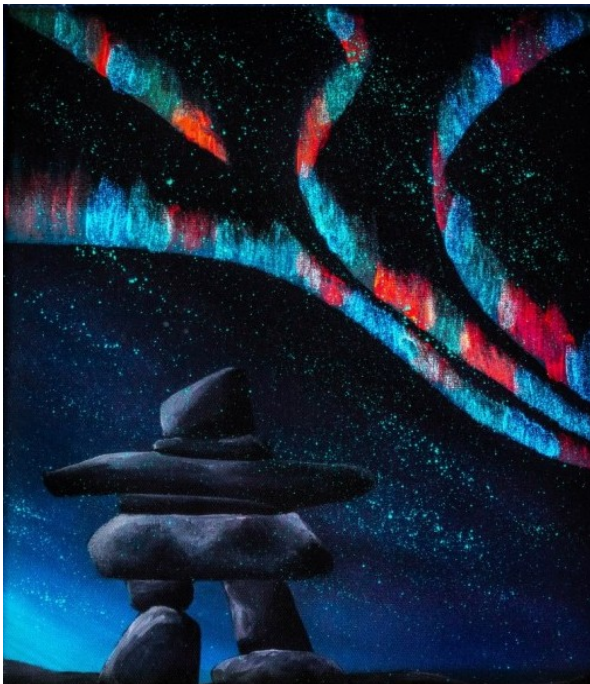
The **History and Heritage** series explores iconic and historical scenery of our Province including UNESCO World Heritage sites, National Parks and Historic Sites, and other important culturally significant images of our Province.



**Holloway Street**  
**H704**



**Viking Vinland**  
**H703**



**Standing in the Light**  
**H701**

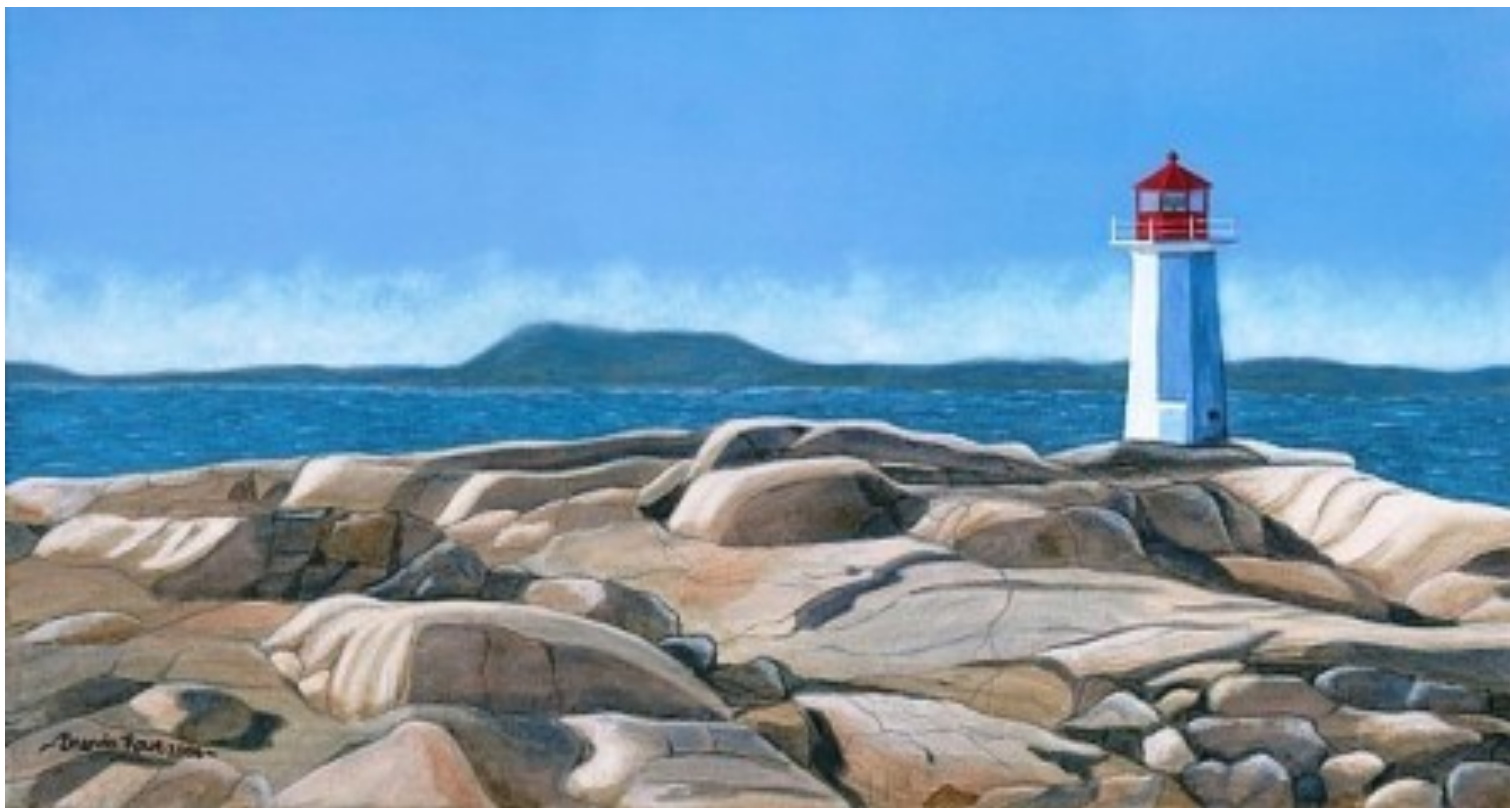
**Signal Hill**  
**H702**



# Beacons of Hope



Lighthouses provided light to guide fishermen and sailors alike in their journey as they navigated the turbulent waters near coves and harbours of NL. The lighthouses inspire and have culminated in this series **Beacons of Hope**.



**Beckoning**  
**B902**



**Cape Race Lighthouse**  
**B905**

**Cape Spear**  
**B904**



**Gros Morne Treasures**  
**B906**



**Point Amour Lighthouse**  
**B901**



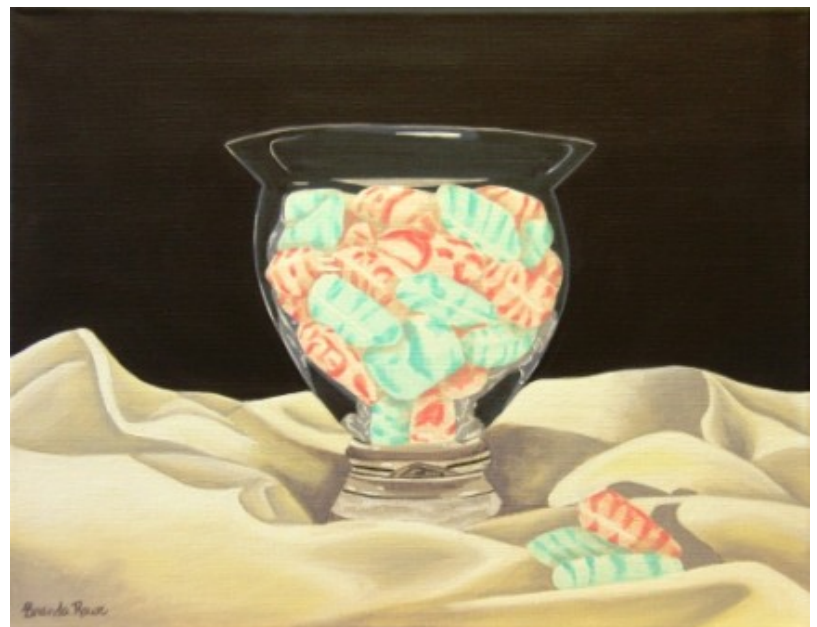
The **Still Life** series depicts inanimate subject matter, typically commonplace objects which are either natural or man-made.



**Green Apples**  
**S302**



**Flexible Flyer III**  
**S301**



**Candy Nobs**  
**S303**

# Found in the Undertow



**Found in the Undertow** is a series of watercolour paintings depicting some of the aquatic species found in our waters. From jellyfish, to crabs and whales, there is a wide variety of sea life to paint.



**Hermit Crab**  
**U806**



**Lion's Mane Jellyfish**  
**U804**



**Ray of Light**  
**U805**



**Humpback Whale**  
**U803**



**Killer Whale**  
**U801**

**Octopus**  
**U802**



# Watercolour Whimsy



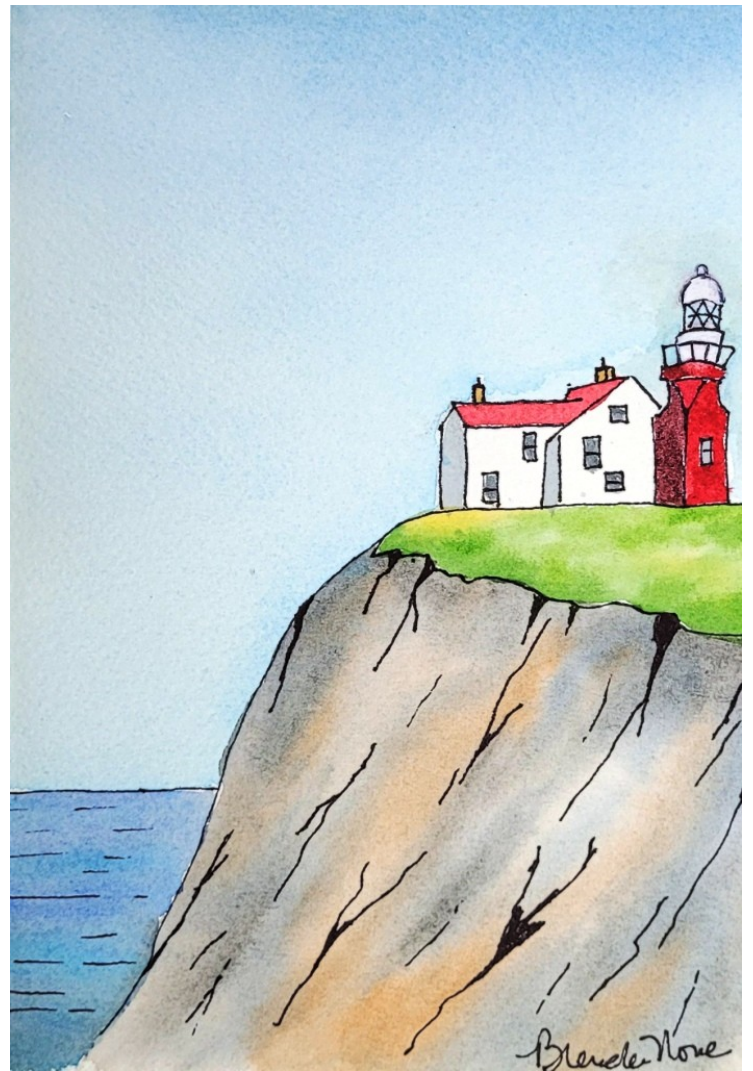
These colourful and whimsical renditions of Newfoundland and beyond are sure to put a smile on your face! The collection is designed to brighten the viewer's day. Perfect in any room of the house.



**Hard Day on Clothes**  
**W1201**



**Inclined**  
**W1204**



**Long Point**  
**W1205**



**Cliff Hangers**  
**W1207**

**Gower St**  
**W1208**





**Kimberly Row**  
**W1202**

**Ferryland on the Edge**  
**W1206**



**On the Edge**  
**W1203**



# About Brenda



**My name is Brenda Rowe. I am an award-winning Newfoundland and Labrador visual artist.**

Inspiration comes in many forms... I capture the essence of the iconic scenery and tell a story of life in our unique Province by land and by sea. My keen eye also locks into fine details, which inspires me to create compositions that focus on detailed, cropped perspectives of everyday or common subjects.

Often, my work cannot be contained by conventional scale. There's a pleasant play on canvas sizes – sometimes a small flower or candy blown up to disproportionate scale on larger canvases, while larger scenes may be shrunk to be suspended in smaller frames. I want viewers of my artwork to recount fond memories or to explore something new each and every day.

My diverse portfolio of artwork has been featured in solo and group exhibitions, on television shows, in magazines, and as an Artist in Residence. I am represented by a number of art galleries and stores in Canada. My pieces are proudly displayed in private collections throughout Newfoundland and Labrador, Canada and around the World.

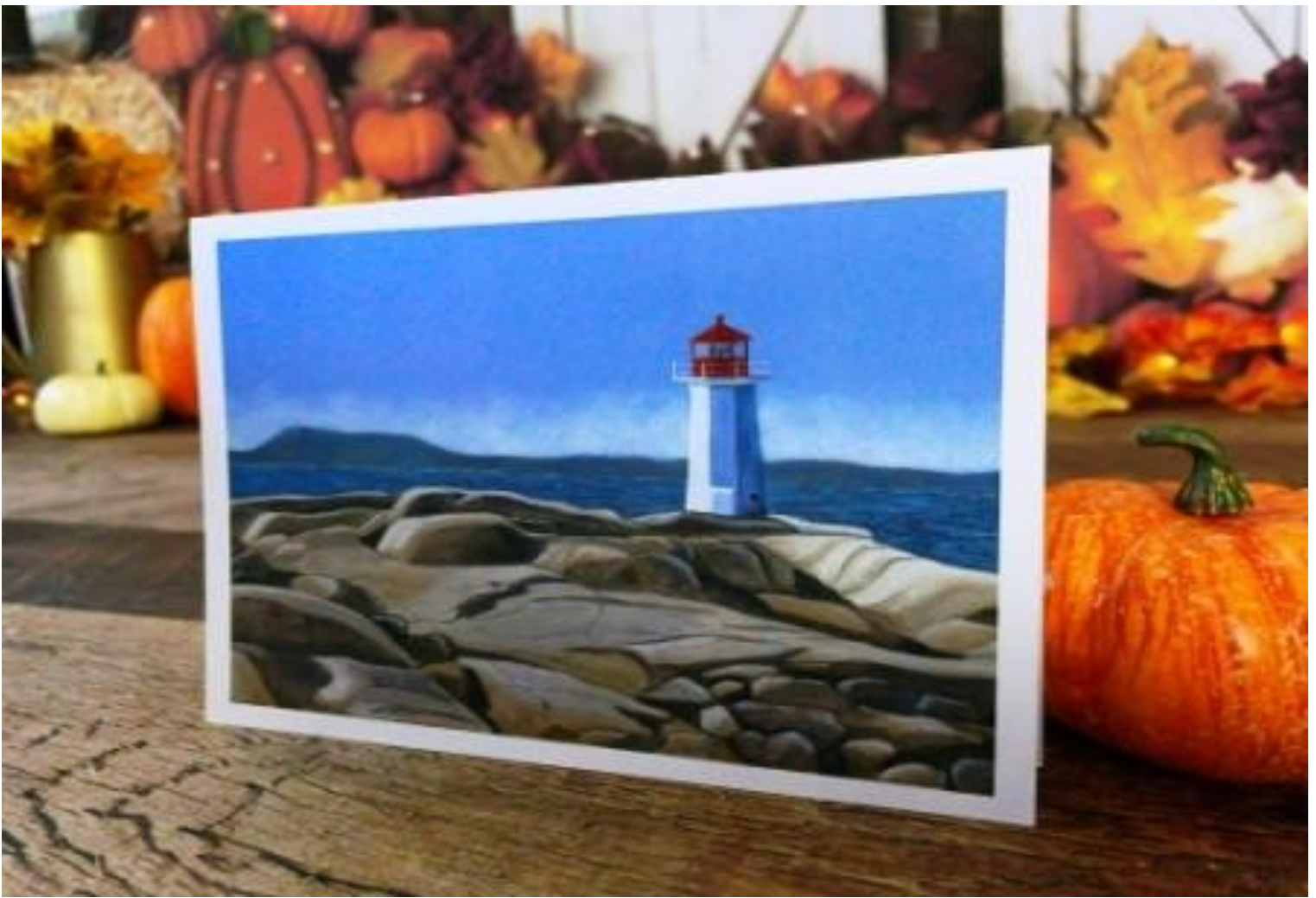
I am a juried member of the Craft Council of NL, Visual Arts Director with the Torbay Folk Arts Council, and Founder of Arts Northeast. I create and teach art in my studio overlooking the ocean in Torbay, NL, Canada.

# Product Descriptions



5"x7" Notecards	35
Porcelain Art Ornaments	36
Matted Art Reproductions	37
Designer Canvas	38
8"x8" Framed Designer Canvas	39





## 5"x7" Note Cards with Envelope

- Blank inside to allow to a hand-written message can be added to brighten the receiver's day.
- Printed on 100% post-consumer recycled paper with archival inks producing a smooth finish and exceptional images that will not fade.
- Note cards are small and easy to transport - perfect souvenirs!
- Gift any of my note cards with a personalized message and place it in a frame for immediate display by the recipient...a perfect gift idea!
- Individually packaged so customers can easily choose the images they want.
- 55 images available to suit any taste and occasion which evoke fond memories in the viewer.



## Porcelain Art Ornaments

- Individually boxed for display and great for gift giving!
- Can be displayed year-round using an ornament holder or on a year-round décor tree.
- Diameter of ornament - 2.75"
- Over 40 images available to suit any taste or occasion.



## LAST YEAR FOR PRODUCTION!!!

My supplier only has approximately 200 ornaments left to print. Then I'll have to find a new supplier, so this may be the last year for ornaments!



# Matted Art Reproductions

- Two sizes available: 8"x10" & 11"x14"
- Premium 100% Cotton Fine Art Paper has a smooth finish and produces exceptional fine art reproductions.
- Over 50 images available to suit any taste or decor.



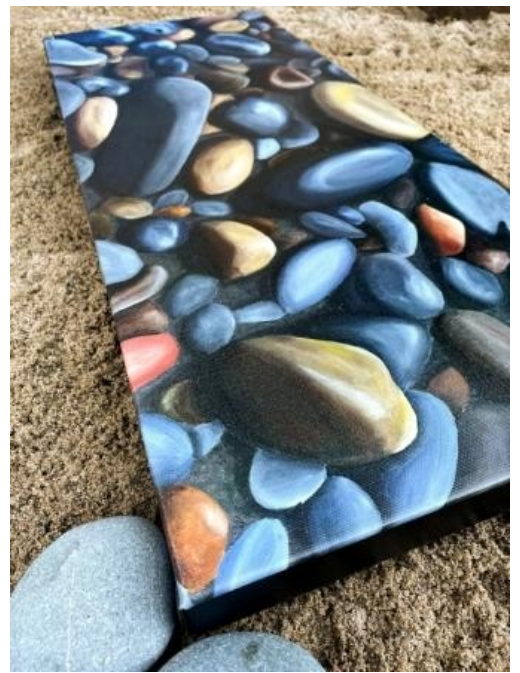
- Available in two sizes that both allow the customer to pop it simply and easily into a frame of their choice, especially beneficial if the matted print needs to be mailed as a gift or packed to take home from vacation.
- Images are printed with archival inks so the image will not fade.

- The plain space that a mat provides between the image and the frame makes the image stand out and be more eye catching.
- Matte prints can be mounted directly under glass with no separation and no worries that the image surface will stick to the glass.



## Designer Canvas Reproductions

- Stretched canvas is the most popular format ordered for larger wall décor.
- Provides the look and feel of original artwork at a more affordable price.
- Gallery-wrapped canvas (1.5" thick) does not need to be framed and is ready to hang. Only need a regular picture frame hanger to enjoy (no special measuring or tools required).
- North American made, satin canvas, featuring a classic 2:1 weave of cotton and polyester providing superior image quality with the smoothest and richest image possible.
- The sides of your canvas are black to provide a sleek, contemporary look.
- Coated with a premium heat set protective satin laminate providing the best image protection and depth.
- Designed for decades of fade resistance and durability.
- Over 45 images and a wide variety of sizes available to suit any



## 8"x8" Framed Designer Canvas Reproductions

- The Float Framed Canvas gives your image a deeper, sleek look, offering clean lines and simple box style frame for the canvas to float in. Perfect for any décor.
- Each frame has a front face of 3/4" and is 1.5" deep allowing for smaller pieces to free-stand on a flat surface (mantel, side table, etc).
- All frames are also ready for hanging and simply need a regular picture frame hanger to enjoy (no special measuring or tools required).





 **BRENDA  
ROWE**  
a r t w o r k

**brenda@brendaroweartwork.com**  
**709-437-ROWE (7693)**

**[www.BrendaRoweArtwork.com](http://www.BrendaRoweArtwork.com)**